

# Samara™ Central Management Console (CMC)

Software for Building a Centralized Appliance Management Station

Managing geographically dispersed appliances can be a daunting task for your customers. Building a solution to help them manage their appliances can be just as overwhelming for appliance start-ups and vendors.

To help solve this challenge for appliance vendors, and as a result their customers, Tall Maple Systems developed Samara CMC, software for building a centralized appliance management station. Samara CMC allows you to easily build a product that enables your customers to securely configure, monitor and control Samara-based appliances deployed throughout their network.



TALL MAPLE  
systems

## Samara CMC Overview

With Samara CMC, you'll have all the software you'll need to build a centralized appliance management station for your customers. Benefits of having Samara CMC for your customers include:

- » A dedicated single appliance capable of supporting hundreds of devices worldwide over LANs and WANs
- » Optimum control of appliances using command profiles, monitoring and scheduling features
- » Timely, customized execution of management tasks
- » The ability to issue large sets of commands to large groups of appliances quickly and easily; also, you can effect large configuration changes on a group of appliances by issuing only a small number of commands
- » Execute commands directly to a single appliance or group of appliances
- » Create command profiles either using the CLI or Web UI
- » Securely communicate with appliances over the network using SSH
- » Access appliances using configured passwords or host keys; manage host key distribution

## Command Profiles

Samara CMC can manage appliances by applying a profile, a set of non-appliance specific configuration settings that can be used to similarly configure a group of appliances. When a profile is applied to an appliance or a group of appliances, certain configuration settings are maintained while others are cleared. For example, a profile will not change the IP address of a network interface. This functionality gives an administrator the ability to easily and quickly apply configuration changes to a large set of appliances with a small set of commands, issued from a central location. Profiles provide a mechanism to maintain a set of configuration commands over time that can be propagated when global/group changes are required. The profile is modified in one place (i.e. on the CMC) and pushed out into the network.

## Direct Command Execution

Samara CMC also has the capability to manage appliances by directly executing commands interactively. Sets of appliances can be specified in groups, giving the administrator the ability to perform configuration and monitoring tasks on a per group basis. Appliance groups also provide flexibility to perform certain operations on one set of appliances, but not another. With direct command execution, the following types of operations are possible:

- » Troubleshoot and correct configuration settings
- » Reboot an appliance
- » Perform software upgrades
- » Collection and aggregation of appliance logs

### Samara (sə-mâr'ə)

*Samara is the fruit or seed produced by North American maple trees.*

*It epitomizes our 'just add water' philosophy — with our solution, simply add your core technology to rapidly bring a product to market.*

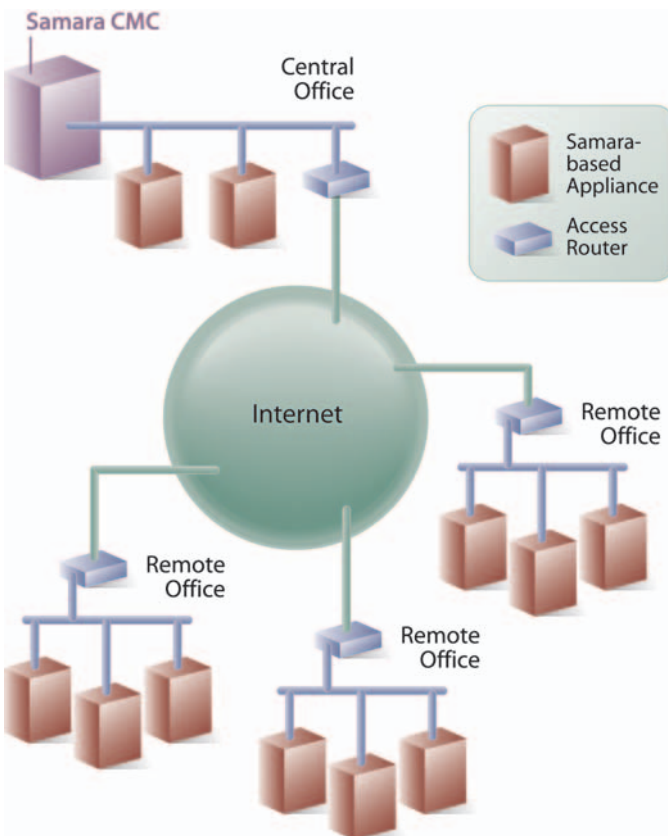
## Monitoring

Samara CMC also delivers single-point monitoring capabilities, helping an administrator perform audits to troubleshoot and diagnose problems, such as determining which software versions are running on remote appliances. All data collected through the Samara monitoring system can be collected for groups of appliances and displayed centrally.

## Command Scheduling

Utilizing the Samara command scheduling functionality also makes it possible for all CMC functions to occur at a specified time. This allows a software upgrade to be performed during off-peak business hours, without requiring an administrator to manually execute this task. Many management tasks can be automated in this manner.

## Samara CMC Architecture



## Samara™ 2.0

### *Appliance Management Platform Software for Linux Internet Appliances*

Tall Maple System's Samara 2.0 is appliance management platform software for Linux-based Internet appliance start-ups and vendors. A comprehensive, highly customizable management platform, Samara helps you accelerate product development by 12 - 18 months, while also saving 50% of the typical product development costs.

Samara includes all of the components and platform development tools you'll need to build an appliance — only your core functionality needs to be added. Samara gives Internet appliance start-ups and vendors a flexible, extensible platform that reduces the risks and costs associated with building an appliance from scratch, ensuring increased functionality, higher quality and rapid delivery to market. Tall Maple's 'just add water' approach enables appliance manufacturers to shorten their prototype-to-product engineering efforts, representing a dramatic reduction in execution risk and time to market. Existing standalone applications can also be ported to Samara.

Samara CMC is licensed separately from Samara 2.0.

## About Tall Maple Systems

Founded in 2002, Tall Maple Systems is a privately-held technology company that develops appliance management platform software for Linux-based Internet appliance start-ups and vendors. Our technology serves as the foundation of Internet appliances on the market and successfully deployed at multiple large customer sites. For more information on our solutions, licensing options and pricing, please visit [www.tallmaple.com](http://www.tallmaple.com) or write to us at [info@tallmaple.com](mailto:info@tallmaple.com).



**TALL MAPLE**  
systems

Tall Maple Systems  
85 Saratoga Ave.  
Suite 139  
Santa Clara, CA 95051  
Phone: 408-248-4867  
Fax: 408-248-4868  
[www.tallmaple.com](http://www.tallmaple.com)